

NORTHERN STATE MEDICAL UNIVERSITY



WELCOME

NORTHERN STATE MEDICAL UNIVERSITY

“Education is the most powerful weapon which you can use to change the world”



NSMU

INTRODUCTION

Northern State Medical University (NSMU) in Arkhangelsk was founded in 1932. It is the biggest and well-known medical university of the Russian North.

Nowadays, about 5000 full-time students study at the faculties. University buildings and clinics are provided with up-to-date equipment and modern simulation centers. There are 55 departments, 27 of them are clinical based in the best clinics of the city. The University is recognized by WHO, ECFMG, Medical Council of India, Medical Board of Thailand, etc.



● TABLE OF CONTENTS

- 04 About NSMU
- 06 Medical Curriculum
- 08 Postgraduate Studies
- 11 Dentistry Curriculum
- 13 Tuition Fees
- 14 Accommodation



● NSMU

NSMU is member of the University of Arctic (the union of 160 universities from all over the World). After passing degree from NSMU students are eligible for regular medical degree examinations at their countries. NSMU is registered at the ECFMG for diploma recognition in USA and other countries.

All our graduates apply their knowledge and skills acquired at the University in the field of healthcare. All the NSMU graduates pass different certification exams when applying for jobs at clinical establishments of any country of the world –from USA and Europe to Australia. Hundreds of our graduates are working abroad (in 56 countries), 55 have defended the PhD in foreign universities and scientific centers. We are proud of our former medical students working in many clinics all around the world. At present our scientists including the young ones collaborate with leading experts from the European Universities and clinics as equals, take part in the international scientific projects, and they are among the experts of the World Health Organization.

NSMU have the educational and scientific contacts and student exchanges with universities of Scandinavia (Norway, Sweden, and Finland), Central and Eastern Europe (Germany and Poland). Foreign citizens are educated at NSMU since 1991. First foreign students were the citizens of India, Syria and Pakistan. Now, about 1400 medical students from 15 countries study at NSMU. English Medium programs in General Medicine (MD/MBBS), Nursing, Dentistry and Master program in Public health are also available. The MPH program was established in 2007.

NSMU

Biggest and well-known medical university of the Russian North.

Founded:
1932

Students:
5000+



The University is recognized by WHO (World Health Organization), ECFMG (USA), Medical Council of India (as per MCI Rules), Medical Board of Thailand, etc.

It is only one MPH program in Russia recognized by the Association of Public Health Schools in Europe. Now there are 50 graduates of International School of Public health in Arkhangelsk (ISPHA) with double diplomas (Russian and Norwegian). The joint PhD program with the Arctic University of Norway is working since the year 2012. During clinical studies, foreign citizens that have graduated from the NSMU and from other higher educational institutions of Russia receive certificates of specialists in different fields of medicine. There are many activities going inside and outside the University – sport, cultural and social. Regular festivals and concerts, sport competitions and other events are making the students life in Arkhangelsk more interesting and light. NSMU has a branch of International Federation of Medical Students Associations. This is a gateway for the regular student exchange available in 60 countries.

ADMISSION CONDITIONS

- Every applicant must have successfully completed secondary education (secondary school, high school, college, etc.) resulting in a school-leaving examination, rewarded with a school-leaving certificate (e.g. A-level certificates).
- Students are accepted on the basis of written entrance examination consisting of two separate tests in the following subjects: Chemistry and Biology. The list of topics for the entrance tests in Biology and Chemistry are available on our web site (www.nsmu.ru).
- The Entrance examination takes place in Arkhangelsk usually from September until the middle of December. Applicants must apply on line via an e-application to be found on our web site or through our exclusive partner Russian Medical Educational Agency LLC and pass the entrance examinations in your native countries.



“better facilities for better education..”





"Education is not preparation for life; education is life itself."

"Education is one thing no one can take away from you."



"A simple but powerful reminder of the positive domino effect a good education can have on many aspects of a person's life and outlook.."



"The aim of education is the knowledge, not of facts, but of values."



"Education is the key that unlocks the golden door to freedom."



All the exams are held in English...



MEDICAL CURRICULUM

The curriculum for medical students consists of 6 years of study with a “subject-oriented” approach. The first two years involve courses in the fundamental theoretical subjects (Medical Terminology, First Aid, Chemistry, Biochemistry, Biophysics, Biology, Anatomy, Histology and Embryology, Neuroscience and Physiology). The 3rd year includes subjects of preclinical education (Pathological Anatomy, Pathological Physiology, Immunology, Microbiology, Community Medicine); and courses providing training in practical skills, prior to the clinical phase, are also included (Clinical Examination in Internal Medicine and Clinical Examination in Surgery). The following 2 years consist of clinical subjects (Pharmacology, Internal Medicine, Surgery, Gynecology and Obstetrics, Pediatrics, Neurology, Psychiatry, Dermatovenereology, Ophthalmology, ENT, Orthopedics, Forensic Medicine, Preventive Medicine, Oncology and Intensive Care Medicine).

The 6th year is an internship in internal Medicine, Surgery, Pediatrics and Family Medicine. The tuition during the pre-clinical part is organized as a schedule of various classes and examinations are only taken during the examination period at the end of the term. Tuition of clinical subjects is organized into one- or two-week blocks. The seminars, both theoretical and practical, including simulation and bedside teaching, are concentrating in morning blocks with a daily duration of hours. The curriculum also contains obligatory practical training during the summer holidays at the 2nd, 3rd, 4th, and 5th years. The finale phase of evaluation – State Doctoral Examination – consists of 3 stages – test, theoretical exam and practical examination. All the exams are held in English.

• POSTGRADUATE STUDIES



“ AFTER GRADUATION, OUTSTANDING STUDENTS MAY CONTINUE IN THEIR PERSONAL DEVELOPMENT AS EARLY STAGE RESEARCHERS BY JOINING ONE OF OUR BRAND NEW DOCTORAL (PH.D.) STUDY PROGRAMMERS..”

After graduation, outstanding students may continue in their personal development as early stage researchers by joining one of our brand new doctoral (Ph.D.) study programmers. Studies in these programs are closely connected to research in individual fields of medical science. Study programs are fully accredited and their language of instructions is English.

Studies in Ph.D. study programs are conducted on the basis of individual study plans and under the guidance of supervisors. Ph.D. candidates not only attend courses granted by credits (ECTS), but they are also part of supervisors research groups. To graduate it is necessary to pass a state doctoral exam and defend a Ph.D. thesis.

WE ALWAYS TRY TO GIVE MORE VALUE & INNOVATION TO THE EDUCATION...

ADMISSION CONDITIONS

- Eligible applicants are bachelor and master degree graduates and their previous education must be recognized.
- All applicants have to apply electronically and attach necessary documents (CV, motivation letter, previous study transcript of record, decision of recognition of previous education, two letters of recommendation from previous teachers).
- Entrance interviews take place in Arkhangelsk; however, Skype (Zoom) interviews are possible based previous agreement.





DENTISTRY CURRICULUM

The curriculum for Dentistry students consists of 5 years of study with a "subject-oriented" approach and it's compatible with current European standards. The first two years of the program include extensive courses in Preclinical Dentistry, Gnathology, Prosthetic Technology – Materials, and Preventive Dentistry, together with the theoretical general – medicine courses (Medical Physics and Informatics, Biology, Medical Chemistry, Biochemistry, Anatomy, Histology, Physiology etc.)

The third year comprises of general-medicine pre-clinical courses (Pathological Anatomy, Pathological Physiology, Clinical Examination in internal Medicine and Surgery etc.) General Medicine courses are taught in a reduced extent with special attention paid to oral and dental problems. From the 5th term onwards, intensive, specialized instruction in dentistry courses are started, continuing until the 10th term. The focus of the dentistry courses is concentrated on both the theoretical and practical aspects, ending in a 15th week pre – graduation. The practical training in the 10th term which emphasizes comprehensive treatment of the patient. In the course of the studies students also complete 4 blocks of vacation-practical training. The studies are completed with State Doctoral Examination in three dentistry subjects (Therapeutic, Surgical and Orthopedic Dentistry). After five years of study students will be qualified to practice in all field of dental care.



“LEARNING WITHOUT LIMITS”

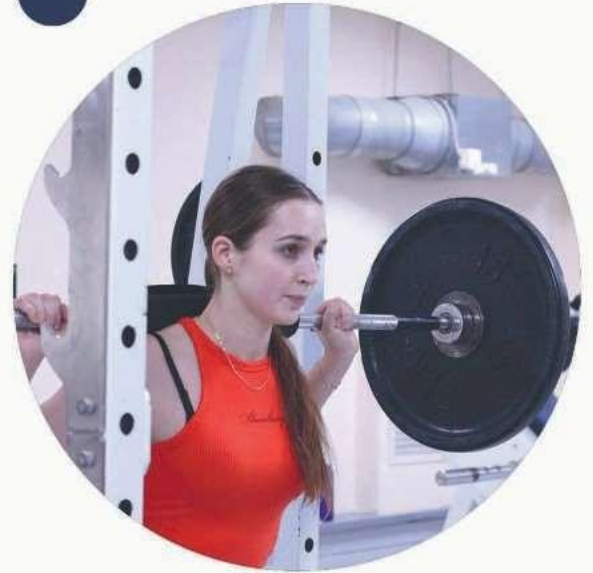


ACCOMMODATION

Student accommodation is located in various districts of the city. Rooms are generally basic shared twin-bedded accommodation equipped with a kitchenette containing a refrigerator and a cooker, a separate bathroom, and a toilet. The rooms also have an internet connection. There are also sport grounds, a gym as well as a canteen with an Assembly Hall.


All hostels are equipped with video surveillance and fire safety systems, guarded by private security companies, whose representative is on the territory of the hostel around the clock. The consumption of alcoholic beverages and smoking are strictly prohibited in the hostels. Students and female students live separately in different buildings of the student campus.







 @nsmuintl

 @nsmuintl

 @northernstatemedicaluniversity

 Arkhangelsk Oblast, Russia.

 rusmea2015@gmail.com



THANK YOU

www.nsmu.ru